

Marathon Active Living Centre Council Presentation



December 18, 2023

Agenda

- **Project Update**
- **Design Update**
 - Landscape Design
 - Building Design
- **Cost Estimate**
- **Next Steps**

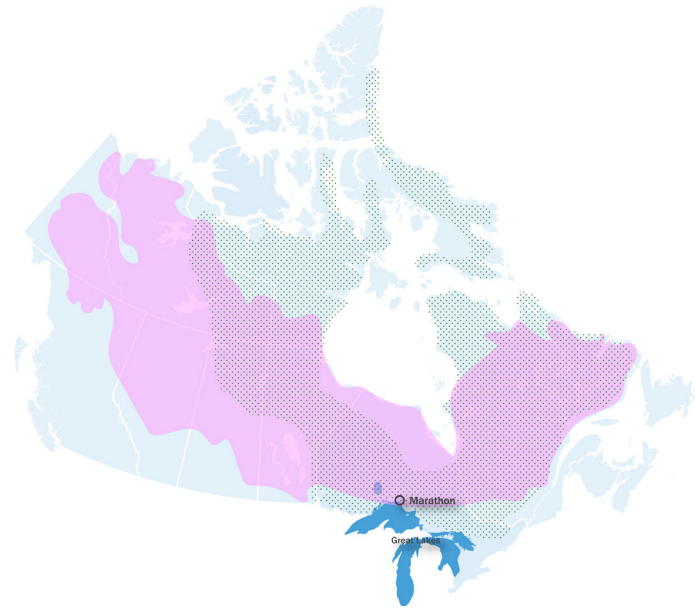


Landscape Drivers

Bring the Town Back to the Water



Unique Confluence



Framing Views



Site Plan



→
Active Living Centre
Marathon, Ontario

Circulation



→
Active Living Centre
Marathon, Ontario

Circulation



→
Active Living Centre
Marathon, Ontario

Circulation + Parking



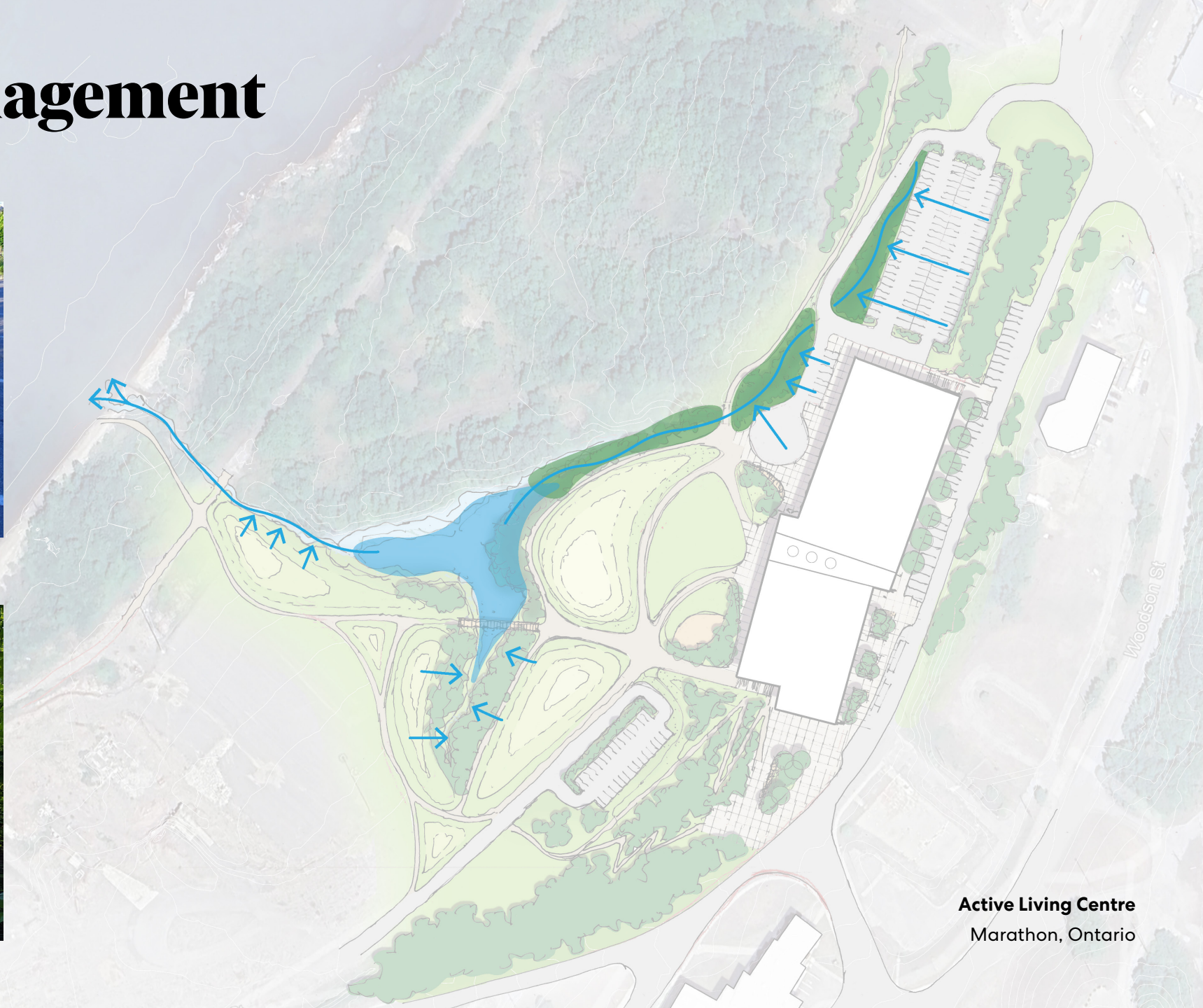
→
Active Living Centre
Marathon, Ontario

Stormwater Management

Parking Stormwater Management



Existing Wetland



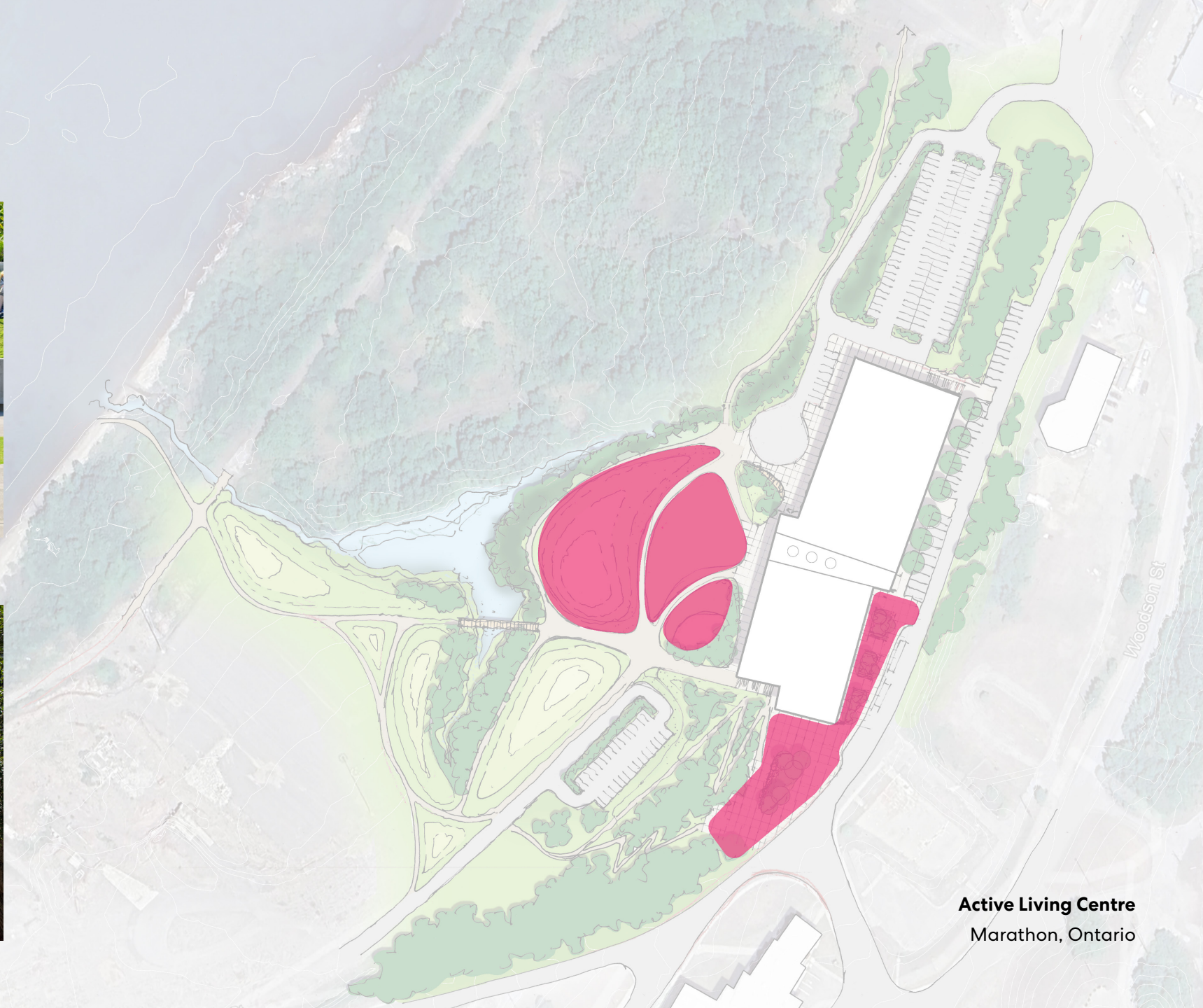
Active Living Centre
Marathon, Ontario

Programming

Open Lawn + Stage



Plaza



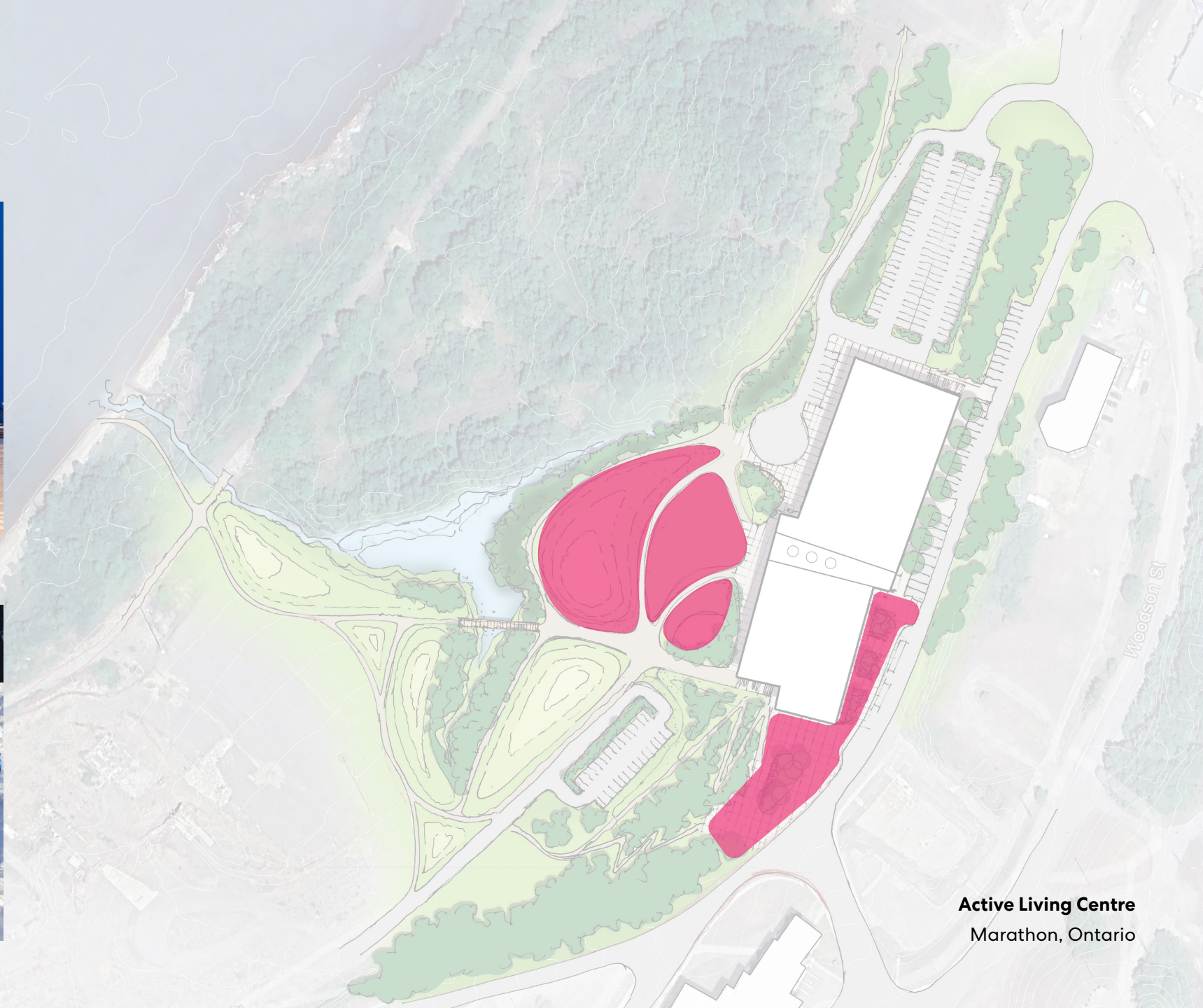
Active Living Centre
Marathon, Ontario

Programming

Outdoor Skating Rink



Tobogganing Hill



Active Living Centre
Marathon, Ontario

Programming

Connection to the Beach



Nature Trails



Active Living Centre
Marathon, Ontario

Programming

Wetland Enhancement

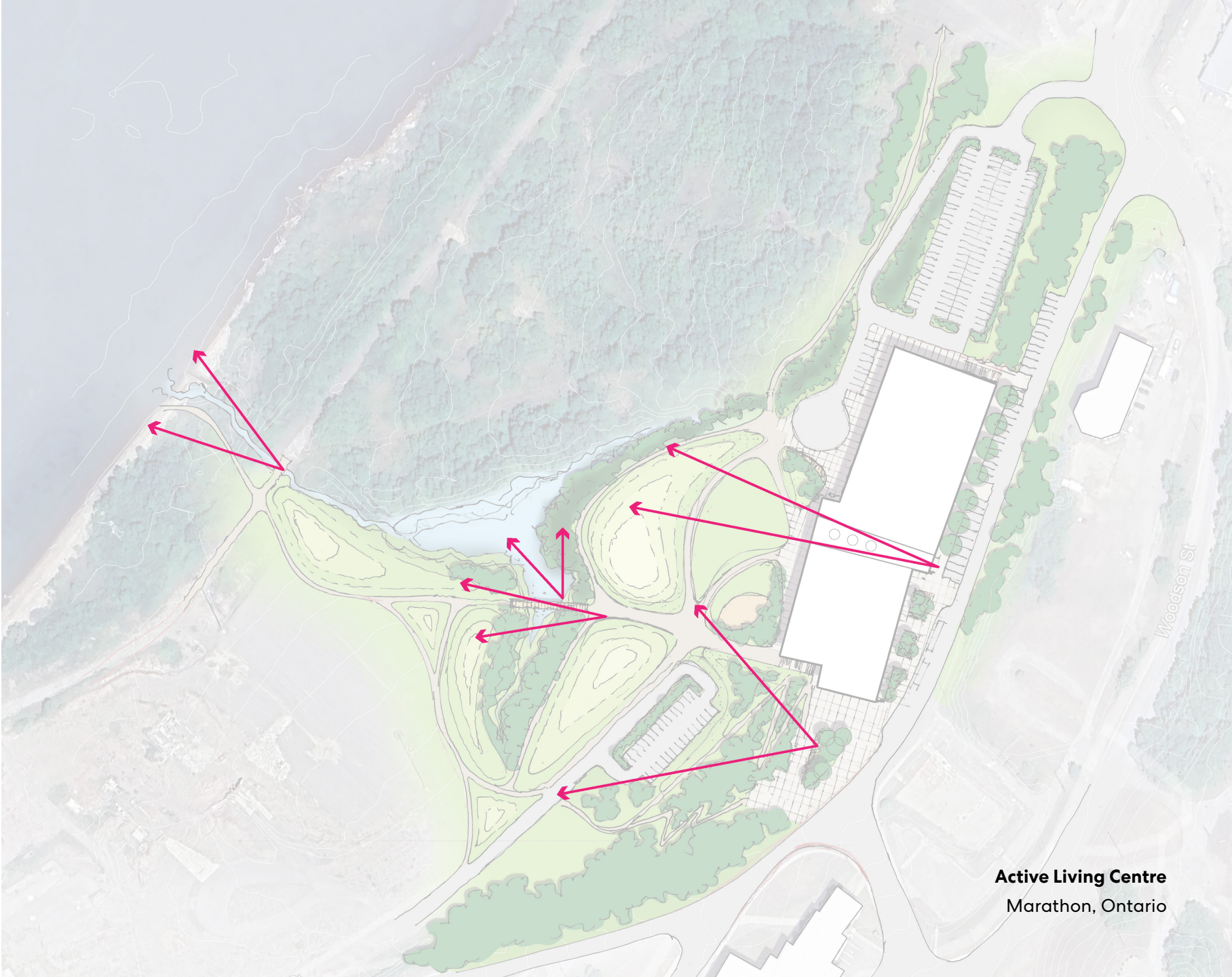


Bridge Connection



Active Living Centre
Marathon, Ontario

Views



Active Living Centre
Marathon, Ontario

Site Plan



→
Active Living Centre
Marathon, Ontario

Program Summary : Building



Rink
Spectator Seating



Aquatics



Dedicated Seniors Rm
Active Multi-Purpose Rm



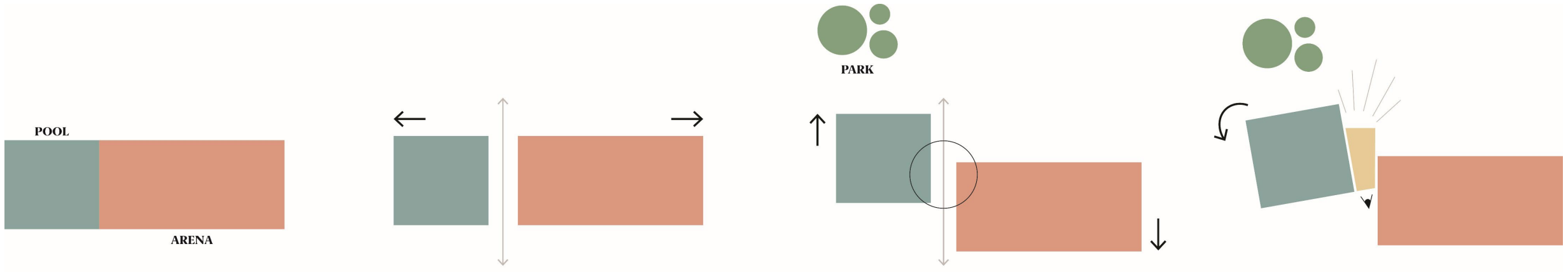
Community
Movie Theatre



Bowling

Concept Design : Building Considerations

Finding the optimum relationships that create connections, community space, transparency and best program use.



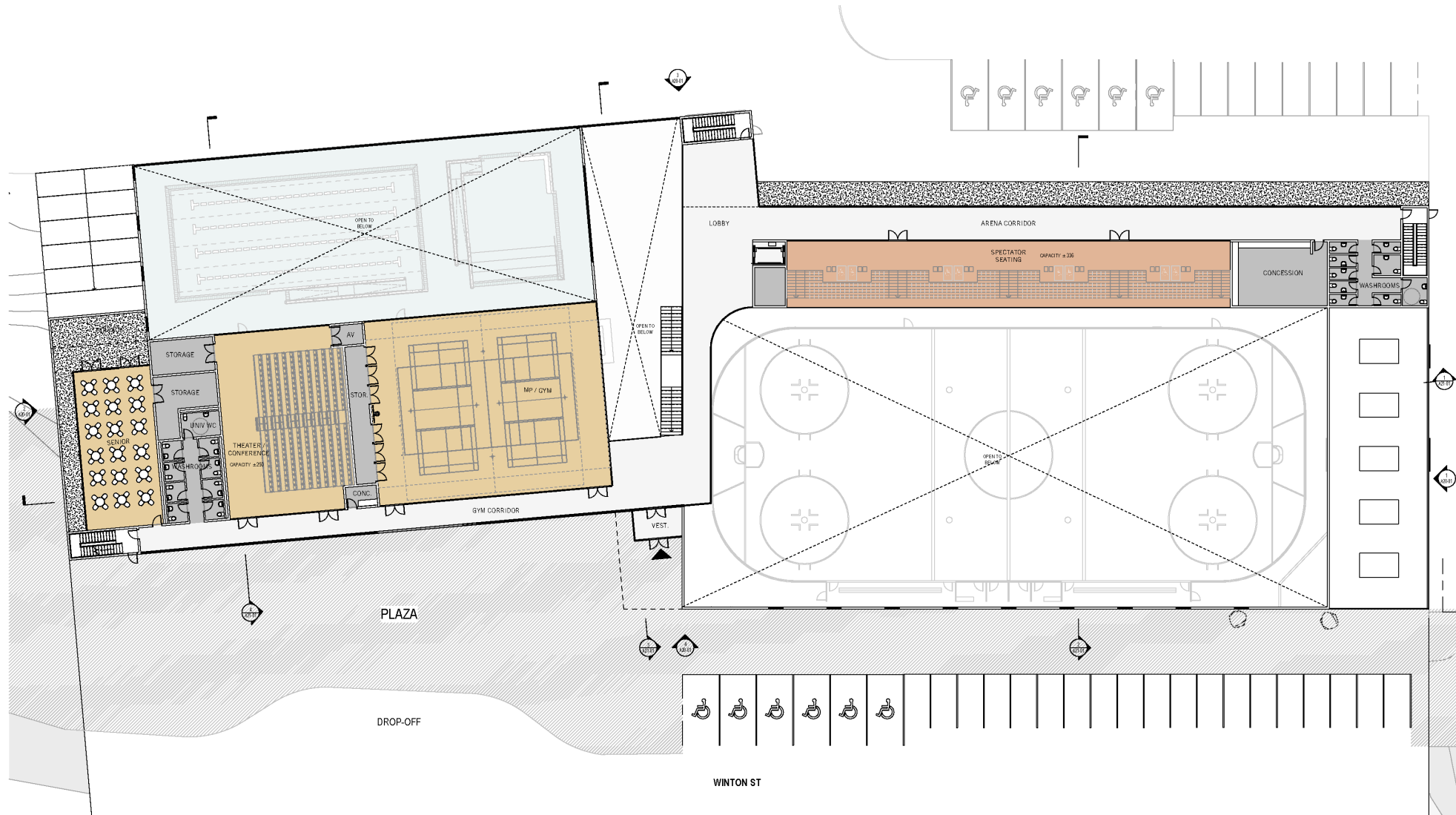
Identify program

Separate volumes to create sightlines

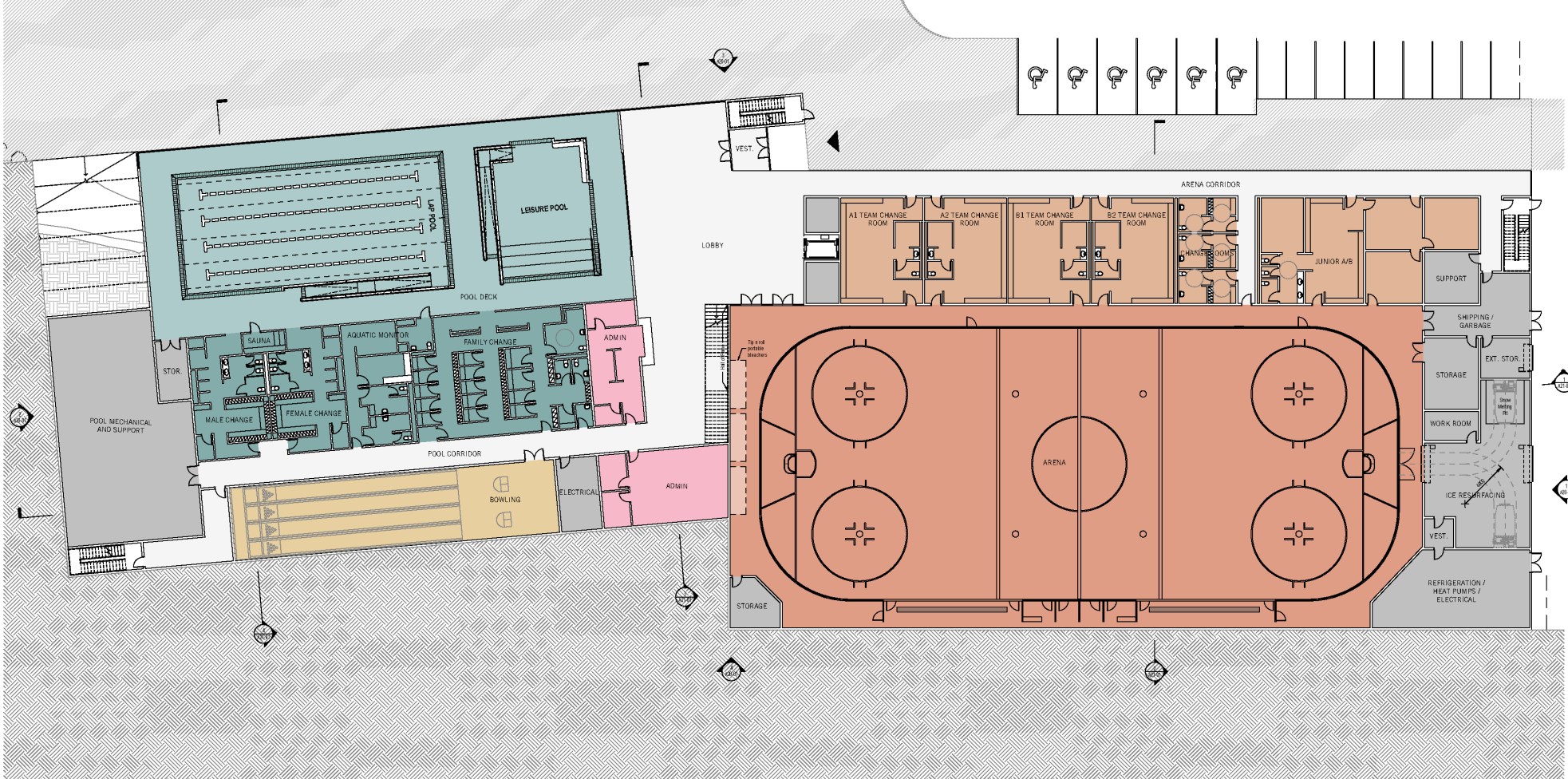
Shift to create central heart

Inflection to frame views of lake

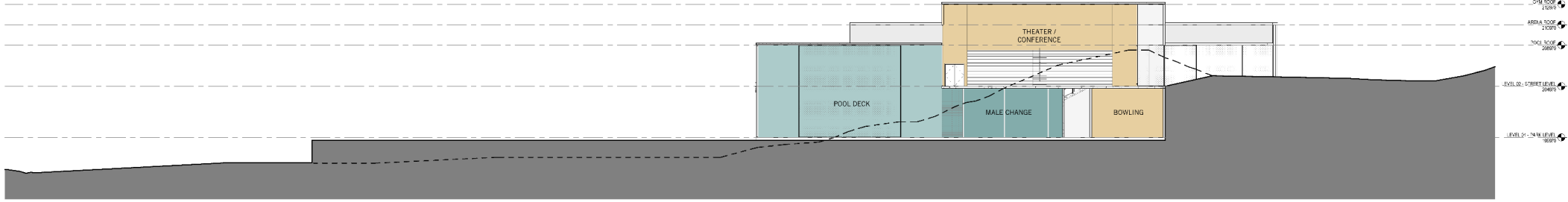
Floor Plan: Upper Level



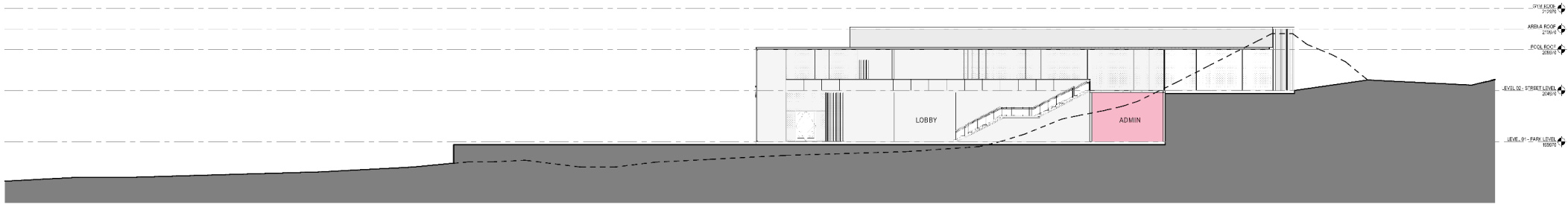
Floor Plan: Lower Level



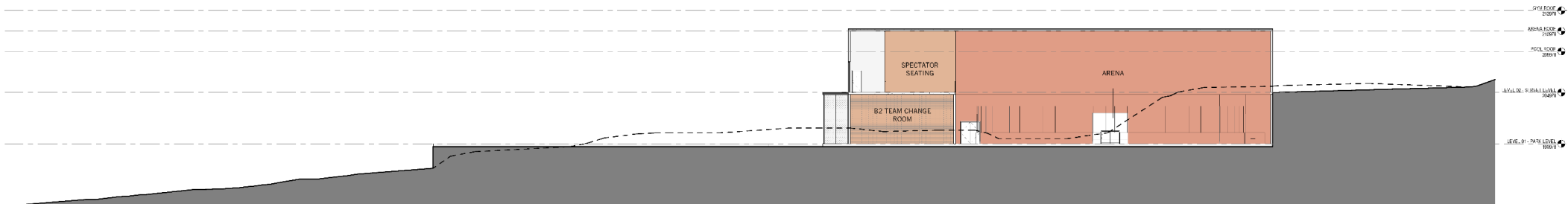
Building Sections



④ SECTION THROUGH THE POOL
1:150

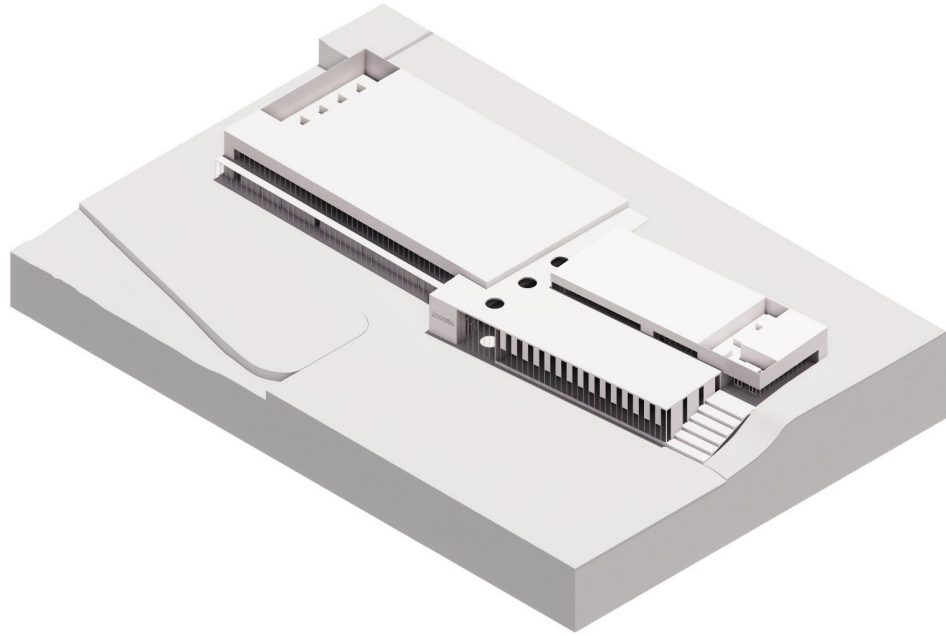


③ SECTION THROUGH THE LOBBY
1:150

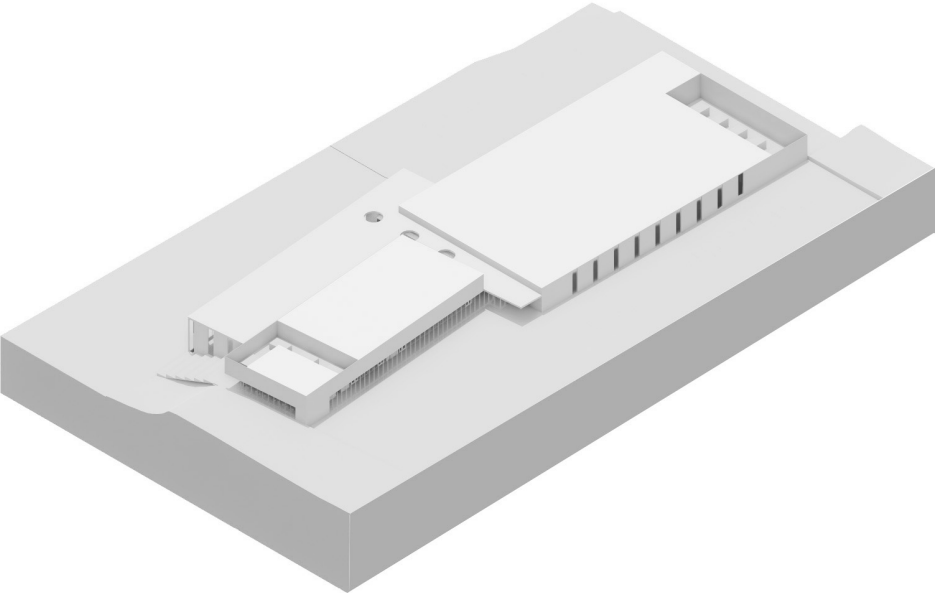


② SECTION THROUGH THE ARENA
1:150

Exterior Views From Southwest



Exterior Views From Southeast



Interior View: Atrium From Upper Level Entry



Cost Summary December 2023

Project Budget (Cost of Construction + Soft Costs)

\$65,000,000

Cost of Construction **\$57,000,410**

Soft Costs **\$7,999,590**

HST

Furniture, Fittings, Equipment

Surveying

Geotechnical Investigations and Reporting

Phase 1 ESA

Phase 2 ESA

Construction Contingency

Landscape Architect Waterfront Masterplan

Architectural and Engineering Services

Landscape, Pool, Acoustic, Costing and Specialty Consulting Services

COSTS required in 2024 to reach Tender ready Construction Documents

\$2, 950,594

Next Steps January to July 2024

- **Geotechnical borehole study and report for selected site**
- **Completion of Phase 1 ESA study for selected site**
- **Phase 2 ESA study for selected site**
- **Waterfront Masterplan: Landscape Architect**
- **Architectural, Engineering, Specialty Consultants to complete tender ready construction documents**

Thank you.